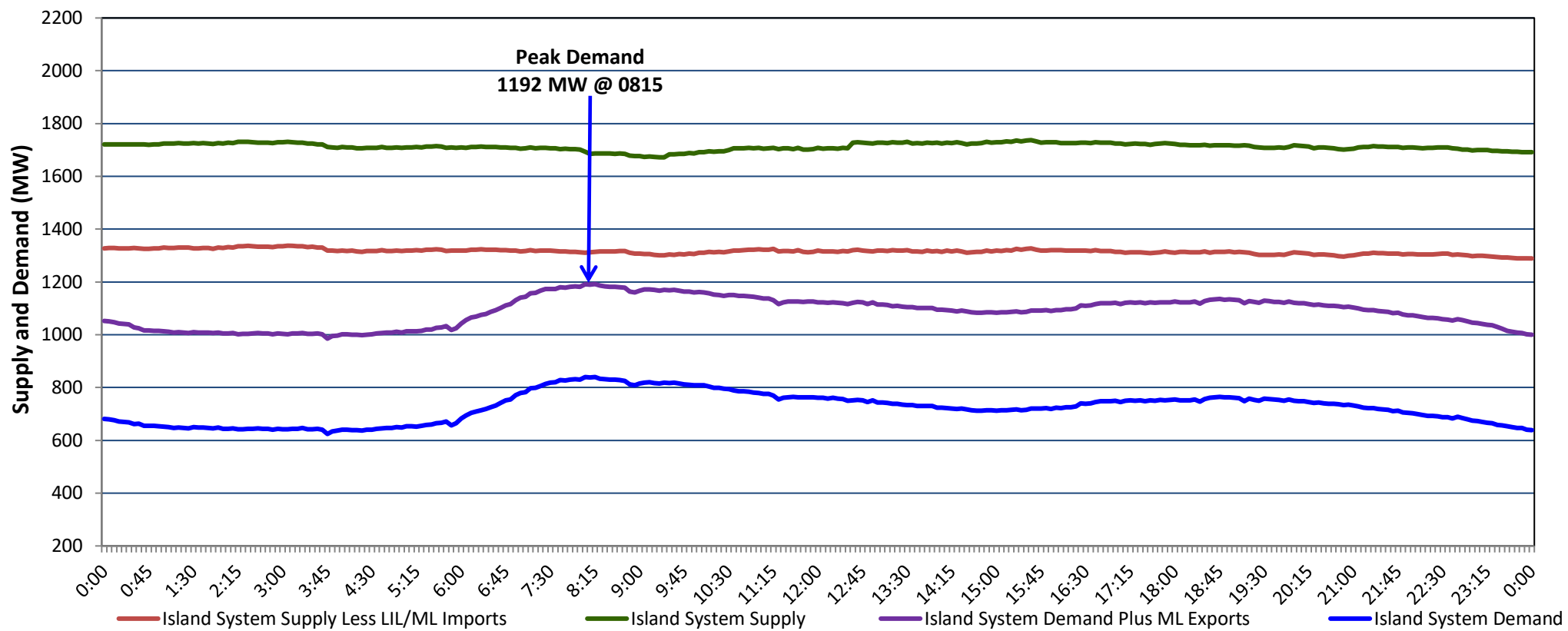


**Newfoundland Labrador Hydro (NLH)  
Supply and Demand Status Report Filed Monday, October 23, 2023**

**Section 1  
Island Interconnected System Supply, Demand & Exports  
Actual 24 Hour System Performance For Friday, October 20, 2023**



**Supply Notes For October 20, 2023**

- A As of 0701 hours, March 06, 2023, Upper Salmon Unit unavailable (84 MW).
- B As of 0800 hours, May 21, 2023, Holyrood Unit 2 unavailable due to planned outage (170 MW).
- C As of 2059 hours, July 13, 2023, Stephenville Gas Turbine unavailable (50 MW).
- D As of 0858 hours, October 08, 2023, Bay d'Espoir Unit 1 unavailable due to planned outage (76.5 MW).
- E As of 1813 hours, October 12, 2023, Holyrood Unit 1 available at 122 MW (170 MW).
- F As of 0827 hours, October 15, 2023, St. Anthony Diesel Plant available at 7.7 MW (9.7 MW).
- G As of 1315 hours, October 16, 2023, Bay d'Espoir Unit 2 unavailable due to planned outage (76.5 MW).
- H As of 1827 hours, October 16, 2023, Holyrood Unit 3 unavailable due to planned outage (150 MW).
- I As of 0810 hours, October 19, 2023, Hardwoods unavailable due to planned outage 25 MW (50 MW).

**Section 2  
Island Interconnected Supply and Demand**

Sat, Oct 21, 2023	Island System Outlook <sup>3</sup>		Seven-Day Forecast	Temperature (°C)		Island System Daily Peak Demand (MW)	
				Morning	Evening	Forecast	Adjusted <sup>7</sup>
Available Island System Supply: <sup>5</sup>	1,712	MW	Saturday, October 21, 2023	13	15	1,215	1,215
NLH Island Generation: <sup>4,8</sup>	985	MW	Sunday, October 22, 2023	16	13	1,130	1,130
NLH Island Power Purchases: <sup>6</sup>	120	MW	Monday, October 23, 2023	6	5	1,205	1,205
Other Island Generation:	210	MW	Tuesday, October 24, 2023	5	6	1,015	1,015
ML/LIL Imports:	397	MW	Wednesday, October 25, 2023	6	7	975	975
Current St. John's Temperature & Windchill:	13 °C	N/A °C	Thursday, October 26, 2023	7	9	935	935
7-Day Island Peak Demand Forecast:	1,215	MW	Friday, October 27, 2023	10	5	970	970

**Supply Notes For October 21, 2023**

- Notes:
1. Generation outages for running and corrective maintenance are included. These are not unusual for power system operations. They generally do not impact customer supply. The power system operators schedule outages to system equipment whenever possible to coincide with periods when customer demands are low and sufficient supply reserves are available. However, from time to time equipment outages are necessary and reserves may be impacted.
  2. Due to the Island system having no synchronous connections to the larger North American grid, when there is a sudden loss of large generating units there may be a requirement for some customer's load to be interrupted for short periods to bring generation output equal to customer demand. This automatic action of power system protection, referred to as under frequency load shedding (UFLS), is necessary to ensure the integrity and reliability of system equipment. Under frequency events have typically occurred 5 to 8 times per year on the Island Interconnected System and the resultant customer load interruptions are generally less than 30 minutes. With the activation of the Maritime Link frequency controller during the winter of 2018, UFLS events have occurred less frequently.
  3. As of 0800 Hours.
  4. Gross output including station service at Holyrood (24.5 MW) and improved NLH hydraulic output due to water levels (35 MW).
  5. Gross output from all Island sources (including Note 4).
  6. NLH Island Power Purchases include: CBPP Co-Gen, Nalcor Exploits, Rattle Brook, Star Lake, Wind Generation and capacity assistance (when applicable).
  7. Adjusted for curtailable load, market activities and the impact of voltage reduction when applicable.
  8. Due to limitations inherent in the design of combustion turbines, the output of combustion turbines may be reduced in the event that ambient temperatures exceed the threshold

**Section 3  
Island Peak Demand Information  
Previous Day Actual Peak and Current Day Forecast Peak**

Fri, Oct 20, 2023	Actual Island Peak Demand <sup>9</sup>	8:15	1,192 MW
Sat, Oct 21, 2023	Forecast Island Peak Demand		1,215 MW

- Notes: 9. Island Demand / LIL / ML Exports (where applicable) is supplied by NLH generation and purchases, plus generation owned and operated by Newfoundland Power and Corner Brook Pulp & Paper (Deer Lake Power, DLP).